

Highlights:

- 500 Watt program power
- Low frequency extension down to 36Hz without processing
- Precision with immersive infra-sub performance
- Tailor-made high excursion 8" aluminum driver for superior outdoor performance
- Vibration-cancelling 10" aluminum passive radiator
- Vibration-decoupled mounting system
- Architecturally discreet and compact design
- Flexible ceiling & wall mount option
- MarineGrade build quality with aluminum housing - Fully unprotected outdoor use

Product information:

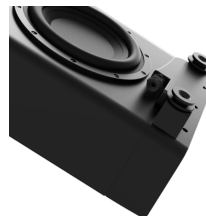
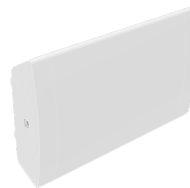
The ARCHI8x delivers powerful and immersive low frequency performance in a compact architectural design, purpose built for demanding outdoor and indoor applications. With a low frequency extension down to 36 Hz without processing and doubled program power compared to NOBA8, ARCHI8x offers precise and controlled sub performance with minimal visual impact.

At its core, a tailor made high excursion 8 inch aluminum driver is paired with a vibration cancelling 10 inch aluminum passive radiator. This combination ensures deep, accurate bass while minimizing resonance and structural vibration. The vibration decoupled mounting system further isolates the enclosure from surrounding surfaces, preserving clarity even at high output levels.

Built with a MarineGrade aluminum housing, the ARCHI8x is designed for fully unprotected outdoor use. Flexible ceiling and wall mounting options make it easy to integrate into architectural environments where discretion, durability, and performance are equally critical.

Applications:

- Bars & Restaurants
- Hotels
- Residential



Properties:

 Weatherproof

Impedance:

Ω 8 Ohm

Usage:



Indoor



Outdoor

System specifications:

Speaker type	8" Bass reflex cabinet	
Continuous power (AES)	250 W	
Program power handling	500 W	
Peak power handling	1000 W	
Impedance	8 Ω	
Max SPL (Continuous)	118 dB	
Sensitivity (1W/1m)	112 dB	
Frequency	Range (-10 dB)	36 Hz - 250 Hz
Connectors	Terminal block with linkthrough	
Drivers	8" woofer	
	10" passive radiator	
	Cone material	Anodized Aluminium
Ingress Protection rating	IPTBA	

Product Features:

Dimensions	25.79 x 6.71 x 15.079 " (W x H x D) (Incl. feet & mounting bracket)	
Weight	25.29 lb	
Operating temperature	-20 °C ~ 70 °C	
Construction	Aluminium with plastic side covers	
Mounting & handling	Vibration-decoupled mounting system	
Colours	Black & White	

Variants:

- ARCHI8X/B - Black version
- ARCHI8X/W - White version