

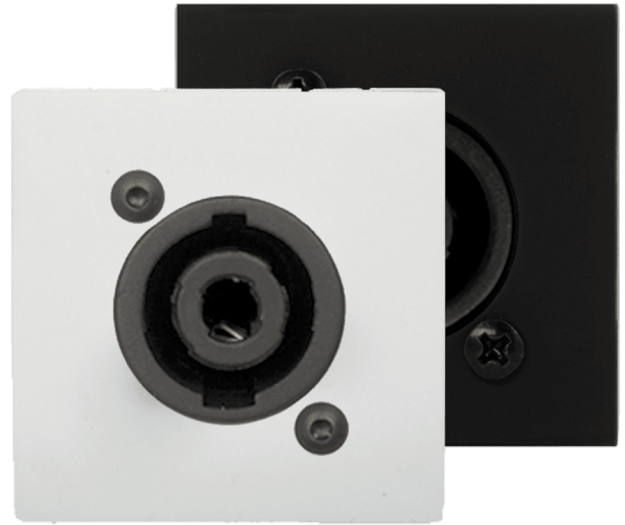
# CP45SPES

## Connection plate D-size speaker 45 X 45 mm - solderless

### Product information:

---

Connection plate with Neutrik Speakon connector, designed to be used with electrical flush mounting boxes that exceeds 47 mm depth. The existing range of CP45 solderless panels are not compatible with WB45 surface mount boxes. Available in Black (/B) & White (/W). The 45 x 45 mm size is compatible with AUDAC, Niko, Legrand and other standard 45 x 45 mm Mounting frames and cover plates.



### Variants:

---

- CP45SPES/B - Black version
- CP45SPES/W - White version