

WMA60M

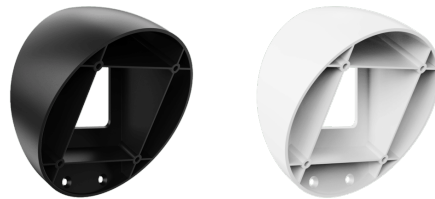
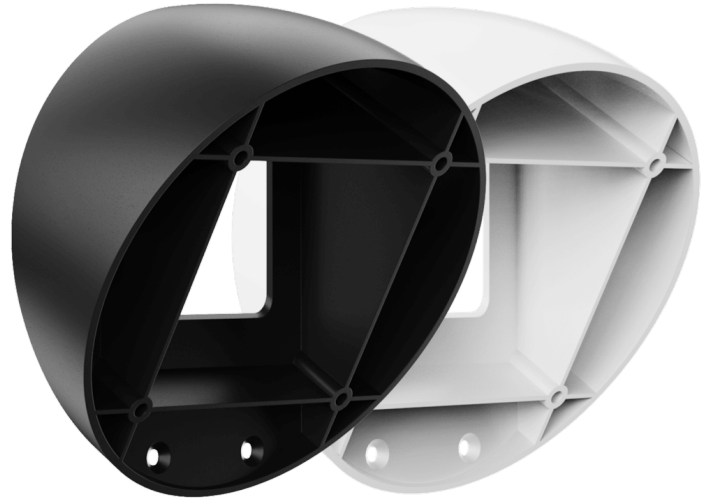
Extension mount with inclination angle for ATEO6M

Highlights:

- For horizontal and vertical placement
- Adds additional inclination angle

Product information:

The WMA series incline bracket is specially designed for the ATEO6M speaker series. These brackets add an extra 30° angle to the already existing incline angle of ATEO speakers. This bracket opens the possibility to place the speaker horizontally or vertically at an angle up to 60° and ensures a perfect sound experience. The bracket extends the CleverMount+™ technology by complementing the flow from the speaker cabinet to its bracket and maintaining the ease of installing the loudspeaker in one good-looking entity.



Properties:

 Weatherproof

Variants:

- WMA60M/B - Black version
- WMA60M/W - White version